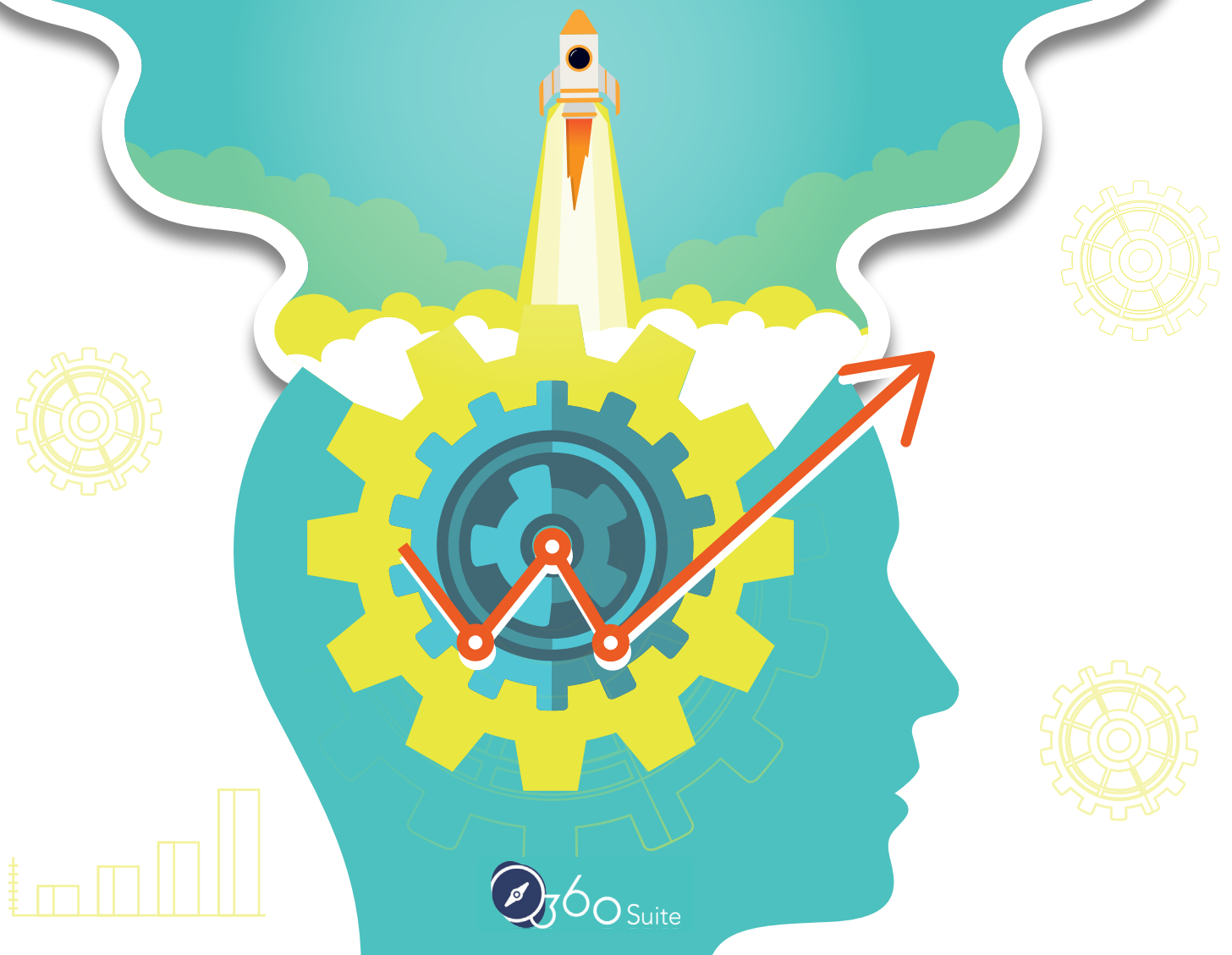


WORK SMARTER:

# 42 REPORTS THAT BOOST PRODUCTIVITY

FOR SAP BUSINESS OBJECTS  
ADMINISTRATORS



# Table of Contents

<b>Introduction</b>	<b>4</b>
<b>1. Platform Usage, Audit &amp; User Adoption Reports</b>	<b>5</b>
CMS	6
CMS Through Time	7
Concurrent User Sessions	8
Empty Groups	8
Users by Last Login Date	9
Document Usage	9
Universe Usage	10
Unused Universe Objects	10
Content Adoption	11
Failed Login Attempts	11
Connections Detail	12
<b>2. Security Reports</b>	<b>13</b>
Object Security Matrix	14
Compare Object Security	15
Overloads Summary	16
Rights Details	16
User Actions List	17
Third-party Authentication	17
<b>3. Compliance Reports</b>	<b>18</b>
Document Usage with Filters	19
Report Documentation	19
Track Unpurged Documents	20
User Actions List	20
<b>4. License Management Reports</b>	<b>21</b>
Recycling Licenses	22
License Compliance User List	22
User Actions List	23
Application-centric License Analysis	23
User-centric License Analysis	24
Connections Per Group	24

# Table of Contents

<b>5. Availability Reports</b>	<b>25</b>
Server Information	26
Server Properties	26
SAP BusinessObjects Services	27
Platform Health	27
Connection to Auditing Database	28
Long-running Documents	28
Unbound Documents & Universes	29
Backup	29
<b>6. Scheduling &amp; Publication Reports</b>	<b>30</b>
Historical Scheduling Analysis	31
Live Scheduling Analysis	32
<b>7. Quality Reports</b>	<b>33</b>
Regression Testing	34
Versioning and Lifecycle Management	35
Track Duplicated Reports	35
Impact Analysis	36
Summary with Bad Documents	36
<b>The Suite Spot</b>	<b>37</b>

# Introduction

---

In Douglas Adams' *The Hitchhiker's Guide to the Galaxy*, it takes a supercomputer known as Deep Thought 7.5 million years to calculate that “the answer to the ultimate question of life, the universe and everything is 42.” Whether Adams chose the number 42 arbitrarily or because it has real significance is a topic for debate. Author Peter Gill ascribed meaning to the number by revealing real-life occurrences of it throughout history in his book *42: Douglas Adams' Amazingly Accurate Answer to Life, the Universe and Everything*. But he missed one: There are forty-two 360Suite reports that are crucial for monitoring various aspects of SAP BusinessObjects.

This ebook contains a comprehensive list of 360Suite reports that boost productivity. It is directed at business intelligence (BI) administrators — the people within an organization who are responsible for installing, maintaining, and administering BI reporting tools. Reports about reporting tools — BI on BI — are important because they provide insight into the efficiency and effectiveness of a sizeable enterprise software investment and answer key questions, such as:

- Is SAP BusinessObjects properly sized to serve user requirements?
- Are users taking full advantage of SAP BusinessObjects?
- Are SAP BusinessObjects reports useful and accurate?
- Are scheduled SAP BusinessObjects reports delivered on time?
- Are SAP BusinessObjects reports in compliance with regulatory requirements?
- Is SAP BusinessObjects secure?
- Do the number of SAP BusinessObjects licenses correlate with actual requirements?

360Suite is a collection of SAP-certified software solutions, developed by Wiliisdom, that enhance the value of SAP BusinessObjects. 360Suite reports empower BI administrators to work smarter, not harder, to solve problems and plan for the future. The term “report” is used loosely in this ebook to refer to prebuilt reports, custom reports, monitoring dashboards, watcher results, and Excel downloads.





# **1.** **Platform Usage,** **Audit & User** **Adoption Reports**

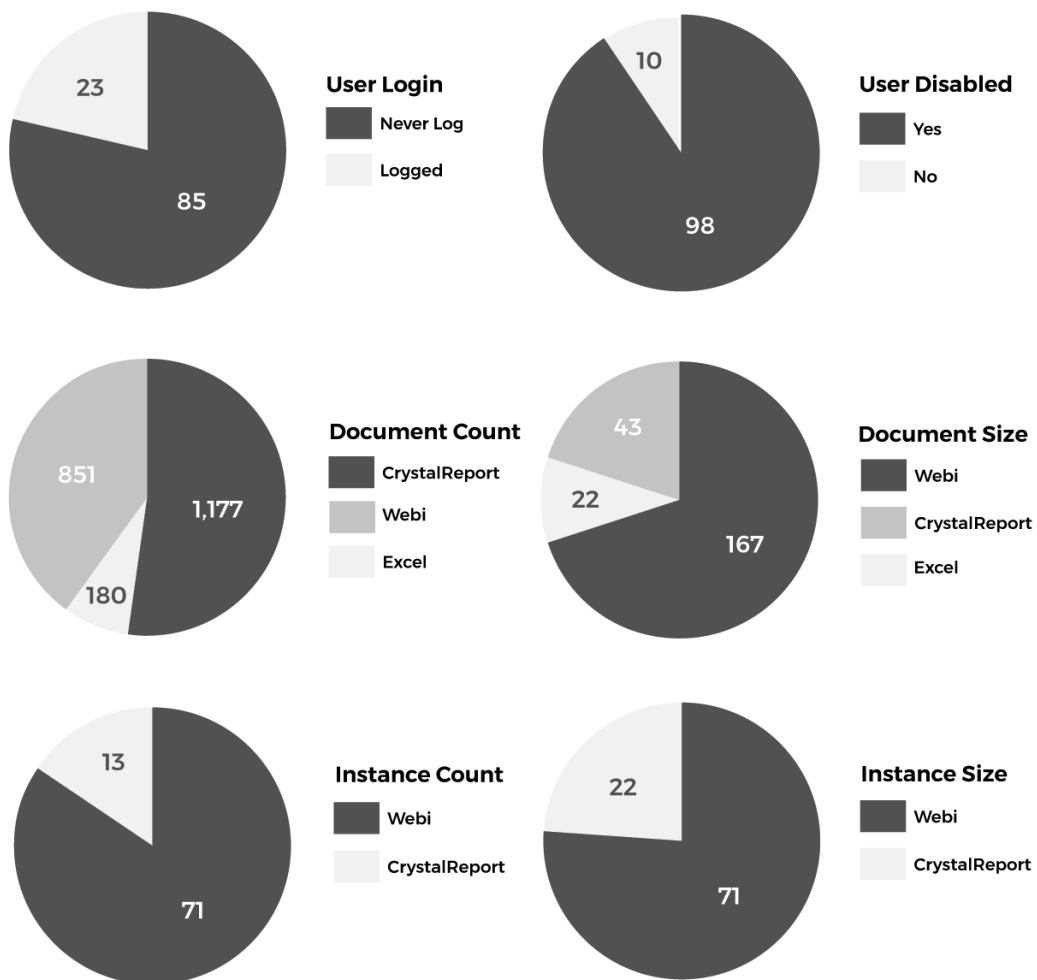


## 1. Platform Usage, Audit & User Adoption Reports

BI administrators must monitor SAP BusinessObjects environments in order to understand how and by whom the platforms are used. Platform usage, audit, and user adoption reports make this possible.

### CMS

This report provides information about the platform, including the user count by login and access status, document count and size by type, and instance count and size by type. It provides an easy way for BI administrators to view numerous system metrics in a single report.

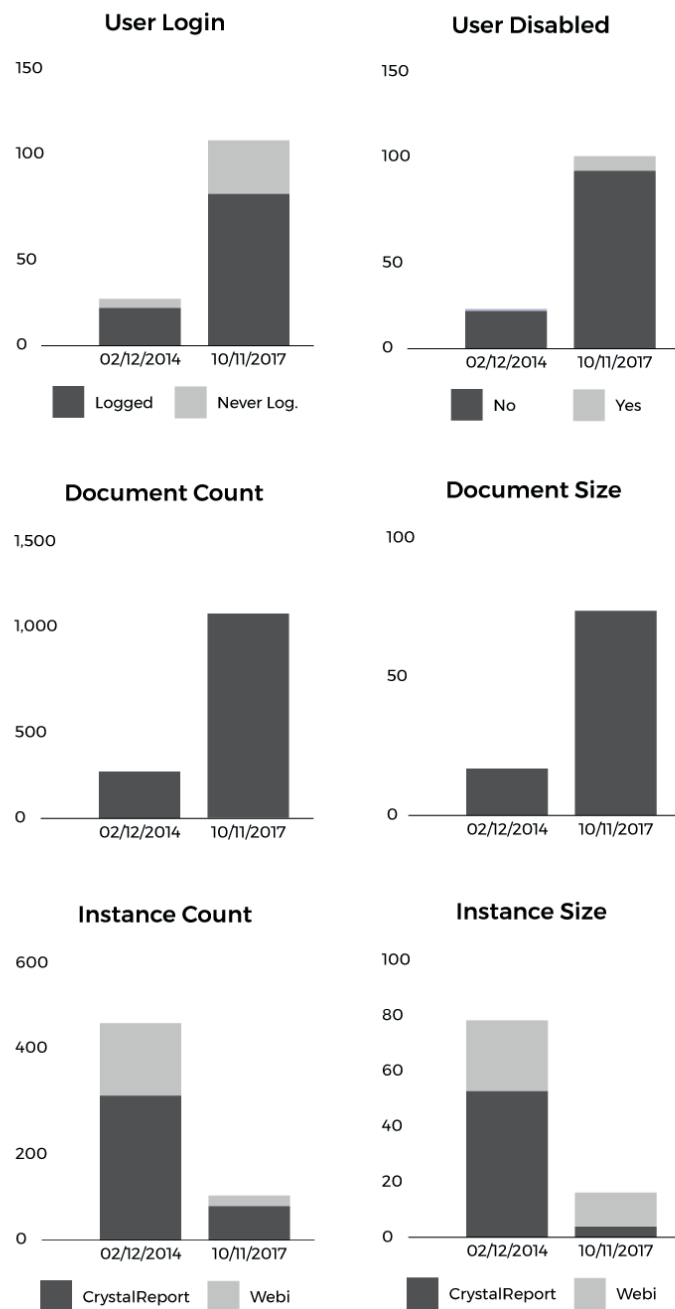




## 1. Platform Usage, Audit & User Adoption Reports

### CMS Through Time

This report provides information about platform changes over time, including the user count by login and access status, instance count and size by type, and document count and size. It helps BI administrators understand the evolution of the SAP BusinessObjects environment and estimate future sizing requirements.



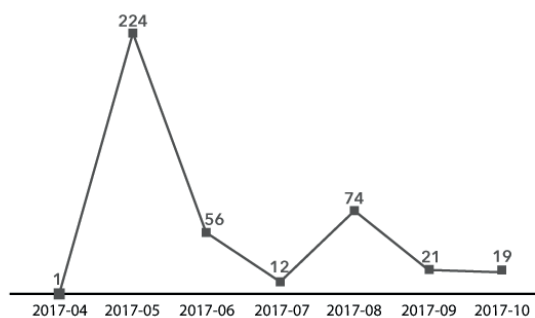


## 1. Platform Usage, Audit & User Adoption Reports

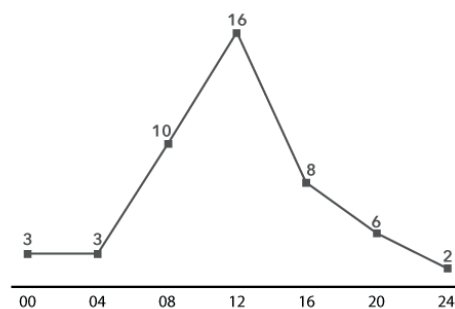
### Concurrent User Sessions

This report provides historical information about how many users connected to SAP BusinessObjects at the same time. It helps BI administrators identify session peaks in order to size the server, determine the ideal number and distribution of licenses by type (e.g., NUL, concurrent, mixed), audit license utilization, and estimate future requirements.

Max Sessions Per Month



Average Sessions Per Hour



### Empty Groups

This report identifies SAP BusinessObjects user groups that contain no users. It helps BI administrators clean up the platform and maintain security by identifying potential loopholes (e.g., the possibility that users could be added inadvertently to empty groups and thereby obtain access rights to which they are not entitled).

Group Name	User Count
Finance	0
Budget	167
Salaries	32
Marketing Documents	0
Marketing Europe	19
Marketing USA	33
Sales Reports	0
Revenue Asia	5
Sales Europe	99
Revenue USA	130



## 1. Platform Usage, Audit & User Adoption Reports

### Users by Last Login Date

This report lists all users, ordered by last login date. It allows BI administrators to determine which SAP BusinessObjects users are active, dormant, and inactive ("never connected") so users can be purged, as needed.

User Name	User Type	User Last Login
Allen	secEnterprise	NEVER CONNECTED
Guest	secEnterprise	NEVER CONNECTED
Administrator	secEnterprise	04/11/2018
Alan	secEnterprise	04/11/2018
Bob	secEnterprise	26/10/2018
Danny	secEnterprise	19/09/2018
Leonard	secEnterprise	11/09/2018
John	secEnterprise	29/08/2018
Julien	secEnterprise	10/04/2018

### Document Usage

This report lists documents, ordered by the date of last action. It allows BI administrators to determine which SAP BusinessObjects documents are used frequently, infrequently, and not at all ("no action") so unused documents can be archived or deleted.

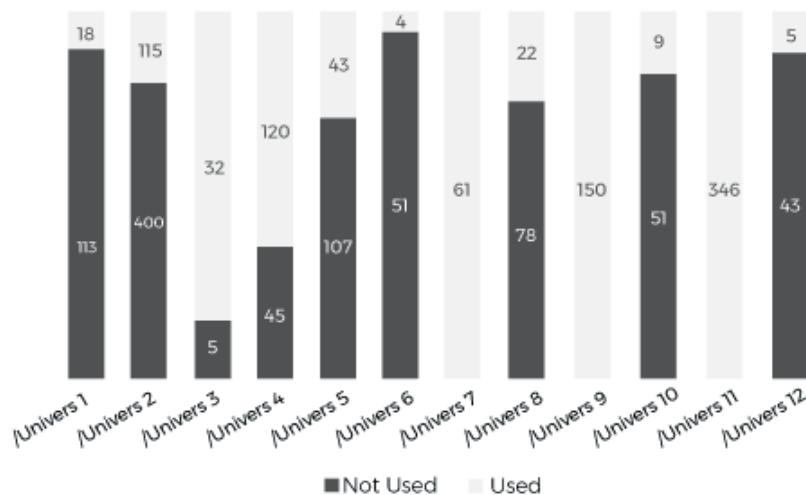
Document Path	Document Cuid	Document Name	Action Count	Last Action Date	Days Since Last Action Date
/Root Folder/Seb/	Aal.euTrBhOrnEPp7tzWOC	Test	0	NO ACTION	NO ACTION
/User Folders/Admin/	Aff3_vjMRONMrGPEXlpuu8s	Universe Usage	0	NO ACTION	NO ACTION
/User Folders/Tony/	AfDWFKz_uxFNtubVuWC0eZs	Contact Status	12	05/27/2019	0
/Root Folder/360Bind/	ASOmKYUk.nZKvj8kAXeXlc	Sales Report	5	05/25/2019	2
/Demo Yasmina/	AfLS7lDzpmJKS4819ThaC2Y	Demo 360Eyes	8	05/25/2019	2
/Demo Remi/	Ac5yUMKEmdRLodwKutk13DI	Demo 360Plus	7	05/22/2019	5



## 1. Platform Usage, Audit & User Adoption Reports

### Universe Usage

This report provides information about Universe usage. It allows BI administrators to determine which SAP BusinessObjects Universes are used frequently, infrequently, and not at all ("no action") so unused Universes can be archived or deleted.



### Unused Universe Objects

This report lists objects by Universe and provides information about object usage in WebI and Deski documents. It helps BI administrators determine which Universes contain large numbers of unused objects and how frequently Universe objects are used so they can understand adoption rates and clean up and optimize Universes.

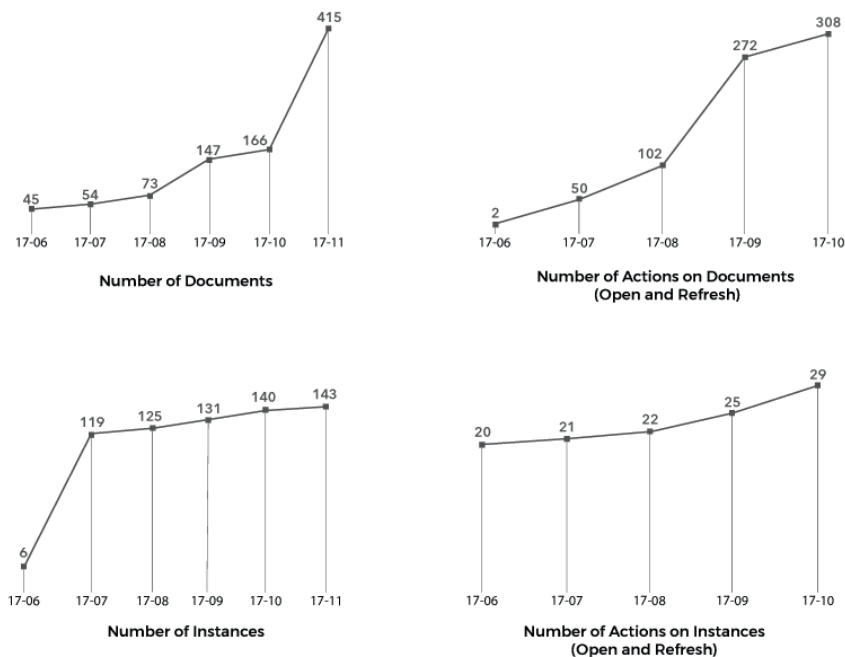
Universe	Class Full Name	Object Name	Object Count
/360eyes universes/360eyes_CMSView on Demand	Eye Snapshot	Last Snapshot (mono CMS)	2
	Eye Snapshot	Last Snapshot (multi CMS)	Not Used
	Eye Snapshot	Snapshot BOE Version	1
	Eye Snapshot	Snapshot Cms	43
	Eye Snapshot	Snapshot Date	48
	Eye Snapshot	Snapshot Id	117
	Eye Snapshot	Snapshot Name	47
	Eye Snapshot	Snapshot User	1



## 1. Platform Usage, Audit & User Adoption Reports

### Content Adoption

This report provides information about monthly changes to the number of documents/instances and actions on documents/instances over time. It helps BI administrators verify that the resources expended to create new content represents a worthwhile investment in useful documents.



### Failed Login Attempts

This report details failed login attempts by identifying users and providing connection information (date, event message, and IP address). It helps BI administrators identify failed connections so they can investigate the causes (e.g., insufficient number of sessions, attempt to gain unauthorized access to SAP BusinessObjects or a particular document).

Connection Date	User Name	Connection Event Message	Connection IP Address Client
22/04/2019	Allan	Enterpriseauthenticationcouldnotlogyouon	98.130.58.221
21/04/2019	John	Enterpriseauthenticationcouldnotlogyouon	59.255.129.199
20/04/2019	Julien	Enterpriseauthenticationcouldnotlogyouon	246.178.70.217
20/04/2019	Ailsa	Enterpriseauthenticationcouldnotlogyouon	208.104.134.190
19/04/2019	Matt	Enterpriseauthenticationcouldnotlogyouon	87.52.201.137
19/04/2019	Jessica	Enterpriseauthenticationcouldnotlogyouon	26.251.18.1
18/04/2019	Emilien	Enterpriseauthenticationcouldnotlogyouon	51.194.198.5



## 1. Platform Usage, Audit & User Adoption Reports

### Connections Detail

This report provides information about all existing connections (Universe and BW), including connection name, network layer, database type, data source, and connection database user. It enables BI administrators to audit database connections in order to perform impact analysis and monitor changes to database versions, drivers, and credentials.

Connection Name	Network Layer	Database Type	Datasource	Connection DB User
BI platform CMS system database	BO OC	SAP BI platform CMS system		
OLAP_BW	BW	SAPBW7.0	win08.dev.gbs	BCUSER
Monitoring TrendDB Connection	JDBC	Generic JDBC datasource	jdbc:derby:C://DBBk//Derby	
360eyeshc	JDBC	MySQL 5	jdbc:mysql://127.0.0.1:3306/3	root
Rio2016	ODBC	MS Excel 2013	RIO2016	
efashion-webi	ODBC	MS Access 2007	efashion-webi	
Audit SQL Anywhere	ODBC	Sybase SQL Anywhere 16	BI4_Audit_DSN	dba
360eyes	ODBC	MySQL 5	360eyes	root
BI4_Audit_DSN	ODBC	Sybase SQL Anywhere 16	BI4_Audit_DSN	sapbi4demo
Greenplum Main	ODBC	GreenPlum 4	GreenPlum prod	sapbouser_prod





## **2.** **Security** **Reports**



## 2. Security Reports

BI administrators are responsible for maintaining the security of data and objects, including managing user access to SAP BusinessObjects folders and content (e.g., Webi, Universes, connections) and monitoring changes over time. Security reports make this possible.

### Object Security Matrix

This report provides information about user access to selected objects (e.g., folders, Universes, connections). It helps BI administrators monitor and manage security, including explicit and inherited rights, at the user and/or group level and recertify accounts.

	Sales AMER	Sales EMEA	Sales APAC
/GBS Sales AMER/	Full Control	No Access	No Access
/GBS Sales AMER/USA	Full Control	No Access	No Access
/GBS Sales AMER/Mexico	Full Control	No Access	No Access
/GBS Sales EMEA/	No Access	Full Control	No Access
/GBS Sales EMEA/France	No Access	Full Control	No Access
/GBS Sales EMEA/UK	No Access	Full Control	No Access
/GBS Sales APAC/	No Access	No Access	Full Control
/GBS Sales APAC/China	No Access	No Access	Full Control
/GBS Sales APAC/Japan	No Access	No Access	Full Control

Note: Highlighted cells indicate explicit access rights; all other access rights are inherited.



## 2. Security Reports

### Compare Object Security

This report provides information about changes to objects security by comparing snapshots of the same or different CMSs at the same or different times and highlighting discrepancies. It helps BI administrators monitor, audit, and manage object security.

		Sales AMER	Sales EMEA	Sales APAC
/GBS Sales AMER/	07/14/2019	Full Control	No Access	No Access
	02/07/2019	View on Demand	No Access	No Access
/GBS Sales AMER/USA	07/14/2019	Full Control	No Access	No Access
	02/07/2019	Full Control	No Access	No Access
/GBS Sales AMER/Mexico	07/14/2019	Full Control	No Access	No Access
	02/07/2019	Full Control	No Access	No Access
/GBS Sales EMEA/	07/14/2019	No Access	Full Control	No Access
	02/07/2019	No Access	Full Control	No Access
/GBS Sales EMEA/France	07/14/2019	No Access	Full Control	No Access
	02/07/2019	No Access	Full Control	No Access
/GBS Sales EMEA/UK	07/14/2019	No Access	Full Control	No Access
	02/07/2019	No Access	Full Control	No Access
/GBS Sales APAC/	07/14/2019	No Access	No Access	Full Control
	02/07/2019	No Access	View on Demand	Full Control
/GBS Sales APAC/China	07/14/2019	No Access	No Access	Full Control
	02/07/2019	No Access	No Access	Full Control
/GBS Sales APAC/Japan	07/14/2019	No Access	No Access	Full Control
	02/07/2019	No Access	No Access	Full Control



## 2. Security Reports

### Overloads Summary

This report lists Universe overloads (i.e., Universe-level security restrictions) by name, principal, “where table,” and “where clause.” It helps BI administrators monitor and manage overloads to ensure that users can’t consume data to which they aren’t entitled.

Name	Principal	Where Table	Where Clause
State=California	Alan	Outlet_Lookup	Outlet_Lookup.State = 'California'
State=California	Alexandre	Outlet_Lookup	Outlet_Lookup.State = 'California'
State=California	HR	Outlet_Lookup	Outlet_Lookup.State = 'California'
State=NYC	Alan	Outlet_Lookup	Outlet_Lookup.State = 'NYC'
State=NYC	Alexandre	Outlet_Lookup	Outlet_Lookup.State = 'NYC'
State=NYC	HR	Outlet_Lookup	Outlet_Lookup.State = 'NYC'

### Rights Details

This report provides information about users/groups and documents that have a Document Fine Right Value of “granted” (G) for a selected granular right (e.g., “view objects”). It helps BI administrators manage user-centric and object-level security by identifying all documents that specific users/groups can act on in a particular way and all users/groups that can act on specific documents in a particular way.

User or Group	Folder Name	Document Name	Document Type	Document Fine Right Value
Inowicki	/Root Folder/ Report Samples	Drilldown	CrystalReport	G
Inowicki	/Root Folder/ Report Samples	Grouping and sorting	CrystalReport	G
Inowicki	/Root Folder/ Report Samples	Interactive Parameters	CrystalReport	G
Inowicki	/Root Folder/ Report Samples	Interactive Parameters Chart	CrystalReport	G
Inowicki	/Root Folder/ Report Samples	Interactive Sort Detail	CrystalReport	G
plancaster	/Root Folder/ Report Samples	Optional Parameter - DCP	CrystalReport	G
plancaster	/Root Folder/ Report Samples	XML Exporting	CrystalReport	G
plancaster	/Root Folder/ Report Samples	Drilldown	CrystalReport	G
plancaster	/Root Folder/ Report Samples	Grouping and Sorting	CrystalReport	G
plancaster	/Root Folder/ Report Samples	Interactive Parameters	CrystalReport	G



## 2. Security Reports

### User Actions List

This report provides information about actions on documents, including user, date, and action type (open, create, save, refresh, no action, etc.). It helps BI administrators identify who acted (or didn't act) on particular documents.

Document Hostname	Document Path	Document Name	Action Username	Action Date	Days Since Last Action Date
Jordan	/Root Folder/Jordan/	Test	NO ACTION	NO ACTION	NO ACTION
Jordan	/User Folder/Admin/	Analysis Autosave	NO ACTION	NO ACTION	NO ACTION
Jordan	/User Folder/Admin/	Test Autosave	jboucher	05/07/2019	Open
Jordan	/User Folder/Admin/	Test Autosave	jboucher	05/07/2019	Refresh
Admin	/User Folders/Admin/	Universe Usage	admin	01/07/2019	Open
Tony	/User Folders/Tony/	Contact Status	tsansico	01/07/2019	Open
Pauline	/Root Folder/360Bind/	Sales Report	planaster	30/06/2019	Save
Pauline	/Root Folder/360Bind/	Sales Report	planaster	30/06/2019	Create

### Third-party Authentication

This report provides information about third-party authentication (e.g., Windows AD, LDAP, SAP), including alias type and login. It helps BI administrators distinguish between native and third-party users and groups, identify users with more than one alias, and locate synchronization issues between third parties and SAP BusinessObjects.

Alias Type	Alias Login
secEnterprise	secEnterprise:360Demo1
secEnterprise	secEnterprise:360Demo2
secEnterprise	secEnterprise:360Demo3
secEnterprise	secEnterprise:360Demo4
secEnterprise	secEnterprise:360Demo5
secEnterprise	secEnterprise:360Demo6

Alias Type	Alias Login
secWinAD	secWinAD:CN=Amelia Brand, CN=Users,DC=demo,DC=gbs
secWinAD	secWinAD:CN=Andrea Sachs, CN=Users,DC=demo,DC=gbs
secWinAD	secWinAD:CN=Bill Irvin, CN=Users,DC=demo,DC=gbs
secWinAD	secWinAD:CN=Cameron Mitchell, CN=Users,DC=demo,DC=gbs
secWinAD	secWinAD:CN=Christopher Judge, CN=Users,DC=demo,DC=gbs
secWinAD	secWinAD:CN=Franck Drake, CN=Users,DC=demo,DC=gbs



### **3.** **Compliance** **Reports**



### 3. Compliance Reports

BI administrators must ensure that SAP BusinessObjects platforms support compliance with external (e.g., regulatory) and internal requirements. One way to do this is by tagging sensitive data and running reports to monitor its location and use. Compliance reports make this possible.



[READ MORE](#)



[READ MORE](#)

### Document Usage with Filters

This report, filtered for sensitive data, provides information about the location and use (or non-use) of documents containing data that has been flagged as sensitive. It helps BI administrators monitor sensitive data.

Document Path	Document CUID	Document Name	Action Count	Last Action Date	Days Since Last Action Date
/Root Folder/Seb/	Aal.euTrBhOrnEPp7tzWoc	Confidentiality Agreement	0	NO ACTION	NO ACTION
/User Folders/Admin/	Aff3_vjMRONMrGPEXlpuu8s	Clients Information	0	NO ACTION	NO ACTION
/User Folders/Tony/	AfDWFkz_uxFNtubVuWC0eZs	Payrolls	12	05/25/2019	0
/Root Folder/360Bind/	ASOmKYUk.nZKvj8kAXeXlc	Bid Documents	5	05/25/2019	2
/Demo Yasmina/	AfLS7lDzpmJKS4819ThaC2Y	Social Security Numbers	8	05/25/2019	2
/Demo Remi/	Ac5yUMKEmdRLodwKutk13DI	Passwords	7	05/25/2019	5

[Learn how to tag your sensitive reports in SAP BusinessObjects](#)

### Report Documentation

This report, filtered for sensitive data, highlights and identifies Universes containing objects that have been flagged as sensitive in reports (e.g., WebI, Deski, Crystal). It helps BI administrators monitor sensitive data.

Class Full Name	Obj Name	Obj Description	Obj Qualification	Last Action Date
Root/Store	Store name	Name of store. #SENSITIVEDATE	Dim.	NO ACTION
Root/Store	Store with long opening hours	Filter for stores with long opening hour	Filter	NO ACTION
Root/Store	Zip Code	Zip code #SENSITIVEDATA	Info.	NO ACTION
Root/Store/Store details	Extended sales floor size	Extended sales floor size #SENSITIVEDATA	Measure	06/23/2019
Root/Store/Store details	Long opening hours	Y=Late night opening, N=Normal store hours	Dim.	06/18/2019
Root/Store/Store details	Name of Manager	Manager's name. #SENSITIVEDATA	Dim.	06/18/2019
Root/Store/Store details	Opening date	Date store opened. #SENSITIVEDATA	Dim.	06/17/2019



### 3. Compliance Reports

#### Track Unpurged Documents

This report, filtered for sensitive data, provides information about unpurged documents, including document path, name, and type; status (empty or non-empty); and the number of rows. It helps BI administrators identify documents that should be purged in order to eliminate the risk of exposing sensitive data.

Document Path	Document Name	Document Type	Status	Number of Rows
/Inboxes/Administrator/	Confidentiality Agreement	Webi	Non Empty	10
/Inboxes/Inowicki	Clients Information	Webi	Non Empty	2,843,936
/Root Folder/I. SAP Event Copenhagen/	Payrolls	Webi	Empty	0
/Root Folder/I. SAP Event Copenhagen/	Bid Documents	Webi	Empty	0
/Root Folder/I. SAP Event Copenhagen/	Social Security Numbers	Webi	Empty	0
/Root Folder/360bind/	Passwords	Webi	Empty	0
/Root Folder/360bind/360bind_01/	Distribution List	Webi	Non Empty	12
/Root Folder/360bind/360bind_01/	Expense per Quarter	Webi	Empty	0
/Root Folder/360bind/360bind_02/	Expense per Store	Webi	Empty	0
/Root Folder/360bind/360bind_02/	Margin per Quarter	Webi	Empty	0

#### User Actions List

This report, filtered for sensitive data, lists user actions on documents containing sensitive data, including the user, action time, and action type. It helps BI administrators manage security.

Document Hostname	Document Path	Document Name	Action Username	Action time	Action Type
UPDATE	/Root Folder/Seb/	Confidentiality Agreement	rbisarre	10/12/2018	Open
UPDATE	/User Folders/Admin/	Clients Information	rbisarre	10/12/2018	Edit
UPDATE	/User Folders/Tony/	Payrolls	ycouty	04/12/2018	Open
UPDATE	/Root Folder/360Bind/	Bid Documents	ycouty	04/12/2018	Open
UPDATE	/Demo Yasmina/	Social Security Numbers	ycouty	04/12/2018	Open
UPDATE	/Demo Remi/	Passwords	pperrier	26/12/2018	Open

Note: Report was filtered to show documents flagged as #SENSITIVEDATA.





## **4.** **License** **Management** **Reports**

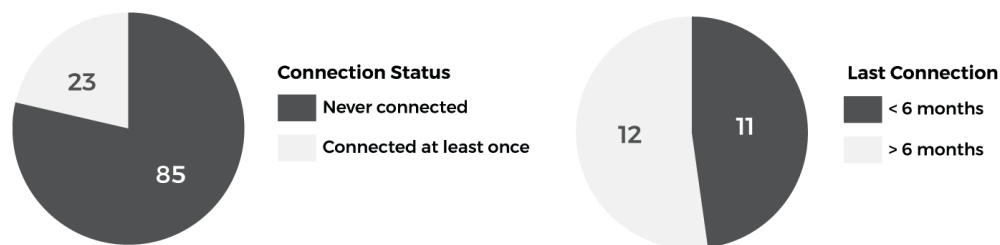


## 4. License Management Reports

BI administrators must ensure compliance with the terms of existing license agreements, analyze license utilization, and estimate future requirements. License management reports make this possible.

### Recycling Licenses

This report provides a general overview of SAP BusinessObjects license utilization, including the number of users who have never connected to SAP BusinessObjects and the number of connected users who have not connected in the past six months. It helps BI administrators evaluate if there's a license adoption issue to resolve and/or if licenses can be recycled to maximize BI investments.



### License Compliance User List

This report facilitates license reviews and compliance by providing a global overview of SAP BusinessObjects license consumption. It helps BI administrators identify users who continue to be associated with licenses even after they have been disabled. It also helps BI administrators determine the number of licenses that are in use and available by type (e.g. Named: Purchased=20; In Use=19; Available=1).

	Disabled	Enabled	Total
Total	2	4	6

User Name	License Type	User Status
rbisarre	Concurrent	Disabled
pperrier	Concurrent	Enabled
ycouty	Concurrent	Disabled
tsansico	Named	Enabled
fguinard	Named	Enabled
mhamiche	Concurrent	Enabled



## 4. License Management Reports

### User Actions List

This report identifies SAP BusinessObjects users who have acted on documents. It helps BI administrators determine the ideal license type for different users (e.g., NUL for users who create/modify documents and CSBL for users who only view reports).

Document Path	Document Name	Action Username	Action Date	Action Type
/Root Folder/Marketing/	Expense per Quarter	Administrator	18/04/19	Create
/Root Folder/Marketing/	Expense per Quarter	Inowicki	02/05/19	Open
/Root Folder/Marketing/	Expense per Quarter	Inowicki	18/05/19	Open
/Root Folder/Marketing/	Expense per Quarter	Inowicki	06/06/19	Open
/Root Folder/Marketing/	Expense per Quarter	Inowicki	06/06/19	Open
/Root Folder/Marketing/	Expense per Quarter	Inowicki	27/07/19	Open
/Root Folder/Marketing/	Expense per Quarter	plancaster	10/07/19	Open
/Root Folder/Marketing/	Expense per Store	Administrator	18/04/19	Create
/Root Folder/Marketing/	Expense per Store	Inowicki	25/07/19	Open
/Root Folder/Marketing/	Expense per Store	Inowicki	27/07/19	Open
/Root Folder/Marketing/	Expense per Year	Administrator	18/04/19	Create
/Root Folder/Marketing/	Expense per Year	Inowicki	24/07/19	Open
/Root Folder/Marketing/	Expense per Year	Inowicki	27/07/19	Open

### Application-centric License Analysis

This report provides detailed information about deployed SAP BusinessObjects licenses from an application-centric perspective. It helps BI administrators determine how many licenses of each type are available for each application. By comparing this information to the SAP BusinessObjects contract, BI administrators can identify compliance problems and take corrective action.

System	Type	Web Intelligence	Desktop Intelligence	BI Launchpad	Crystal Reports	CMC	Universe Design Tool	Information Design Tool
@sapbi42prod	Concurrent	49	49	49	8	49	8	49
@sapbi42prod	Named	49	49	49	14	49	14	49
Total		98	98	98	22	98	22	98



## 4. License Management Reports

### User-centric License Analysis

This report provides detailed information about deployed SAP BusinessObjects licenses from a user-centric perspective. It helps BI administrators determine which users can access what applications with what license type.

System	User Name	User License	Web Intelligence	Desktop Intelligence	BI Launchpad	Crystal Reports
@sapbi42prod	rbisarre	Named	1	1	1	1
@sapbi42prod	pperrier	Named	1	1	1	1
@sapbi42prod	ycouty	Concurrent	1	0	1	0
@sapbi42prod	tsansico	Named	1	1	1	1
@sapbi42prod	fguinard	Concurrent	1	0	1	0
@sapbi42prod	mhamiche	Named	1	0	1	0

### Connections Per Group

This report provides information about the number of SAP BusinessObjects connections by group/department/business unit. It helps BI administrators determine what groups are most and least active in order to anticipate requests for additional licenses and address user adoption problems.

Group Name	Connection Count
Administrators	1,256
Finance America	349
Finance Asia	809
Finance Europe	345
HR	288
Marketing	992
Presales	4,442
Sales	2,624



## **5.** **Availability** **Reports**



## 5. Availability Reports

BI administrators must monitor system availability to satisfy service-level agreements (SLA), identify and resolve problems before they impact server performance and stability, and fine-tune the SAP BusinessObjects environment. Availability reports make this possible.

### Server Information

This report provides information about SAP BusinessObjects servers, including name, disk space, CPU count and name, memory, operating system, and version. It helps BI administrators understand the configuration of the SAP BusinessObjects environment in order to determine if it's sized correctly and installed in a way that is fit for purpose.

<b>Server Name</b>	<b>Server Local Time</b>
Sapbi42	7/18/19
<b>Server Available Disk Space</b>	<b>Server Memory</b>
55,325	16,383
<b>Server Cpu Count</b>	<b>Server OS</b>
2	Windows Server 2019 10.0
<b>Server Cpu Name</b>	<b>Server Total Disk Space</b>
AMD64	122,527
<b>Server Last Start</b>	<b>Server Version</b>
7/13/19	14.2.4.2410

### Server Properties

This report provides information about the configuration of all services running on SAP BusinessObjects servers, including property names and values. It helps BI administrators understand how the deployment is set up so they can determine if the configuration is fit for purpose. It also helps BI administrators with sizing, performance monitoring, and fine-tuning of SAP BusinessObjects.

<b>Server Name</b>	
SAPBI14DEMO.AdaptiveJobServer	
<b>Property Name</b>	<b>Property Value</b>
Auditing Service : AuditLogFilesDirectory	%DefaultAuditingDir%
Auditing Service : AuditMaxEventsPerFile	500
Auditing Service : AuditStatus	1
CPU	AMD64
CPU Count	2
Crystal Report Scheduling Service : maxChildReqs	100
Crystal Report Scheduling Service : maxJobs	5
Destination Delivery Scheduling Service : maxChildReqs	100
Destination Delivery Scheduling Service : maxJobs	5
DiskSpace Available	3.1892750336E10
DiskSpace Total	1.07004030976E11
Host Address	172.16.0.1171
Host Name	sapbi4demo



## 5. Availability Reports

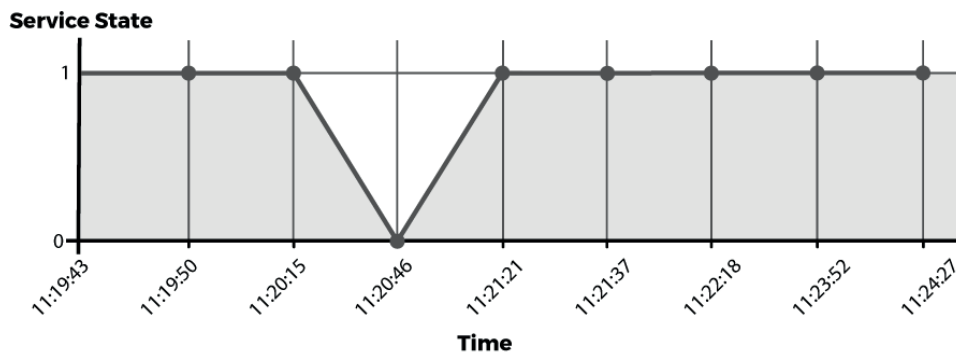
### SAP BusinessObjects Services

This report provides information about the state of monitored services by assigning the following values:

0 = NOT RUNNING

1 = RUNNING

It helps BI administrators determine if there are problems with monitored services that require action.



### Platform Health

This report provides information about the distribution of activity across multiple servers. In the case of clusters (multiple servers connected together), it helps BI administrators monitor nodes, identify when action is required to ensure the equal distribution of activity (+/- 10%), and maintain platform health.

Server Name (Short)	Event Status	Server Name	Total Event Count
SERVER1	Concurrent Logon Succeeded	LCCBO4.CentralManagementServer	61
	Logout Succeeded	LCCBO4.CentralManagementServer	208
	Modified Successfully	LCCBO4.CentralManagementServer	122
	Refreshed Successfully	LCCBO4.WebIntelligenceProcessingServer	46
	Refreshed Successfully	LCCBO4.WebIntelligenceProcessingServer1	42
	Viewed Successfully	LCCBO4.APS.Auditing	110
	Viewed Successfully	LCCBO4.WebIntelligenceProcessingServer	46
	Viewed Successfully	LCCBO4.WebIntelligenceProcessingServer1	42
SERVER1	Sum:		677
	Percentage:		55%
Server Name (Short)	Event Status	Server Name	Total Event Count
SERVER2	Concurrent Logon Succeeded	LCCBO4.CentralManagementServer	39
	Logout Succeeded	LCCBO4.CentralManagementServer	131
	Modified Successfully	LCCBO4.CentralManagementServer	78
	Refreshed Successfully	LCCBO4.WebIntelligenceProcessingServer	57
	Refreshed Successfully	LCCBO4.WebIntelligenceProcessingServer2	55
	Viewed Successfully	LCCBO4.APS.Auditing	90
	Viewed Successfully	LCCBO4.WebIntelligenceProcessingServer	57
	Viewed Successfully	LCCBO4.WebIntelligenceProcessingServer2	55
SERVER2	Sum:		562
	Percentage:		45%
Sum:			1239



## 5. Availability Reports

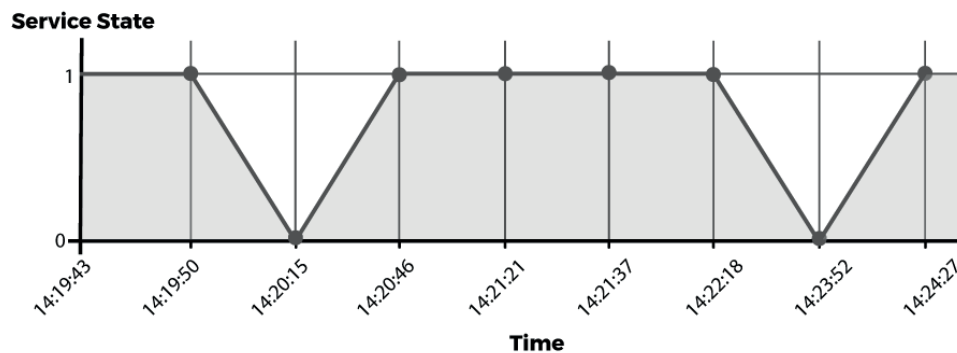
### Connection to Auditing Database

This report provides information about the communication between SAP BusinessObjects and the auditing database by assigning the following values:

0 = NO CONNECTION

1 = CONNECTION

It helps BI administrators ensure that SAP BusinessObjects is communicating with the auditing database, which is critical for monitoring and recording user interactions with the system. When the report indicates no connection between SAP BusinessObjects and the auditing database, BI administrators can troubleshoot and resolve the problem.



### Long-running Documents

This report provides information about the runtime of WebI reports, whether scheduled, on-demand, ad hoc, or saved. It helps BI administrators identify long-running WebI reports so they can take action before the reports impact server performance. Long-running WebI reports are usually caused by design flaws (e.g., failure to limit queryable data), so this report is particularly useful to organizations that offer self-service reporting. BI administrators can even set up watchers and receive alerts whenever WebI sessions run for longer than a threshold value.

ID	Name	Type	Duration
AY22VFLVpvFMqO0IywFMOaw	Data Export	Document	00:01:02
AbQetLFGdBHjWomCa6K9B8	New Document*	ADhoc	00:03:55
AXLAAlyzCINJgl_IHMu.ngc	Sales Revenue	Document	00:06:33
AQWTOk0aa_JNhWMD5a05x5k	My Report	Document	00:07:14





## 5. Availability Reports

### Unbound Documents & Universes

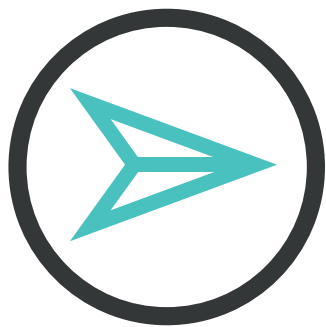
The report lists all unbound documents and Universes — those with weak or broken links (aka orphan) — and includes document name, path, CUID, and type. It helps BI administrators identify weak/broken links so the links can be repaired.

Document Name	Path	CUID	Document Type
Track User Activity	Admin > Reports	AZvPJSVLveVCuID823Xgt3c	Webi
CR Table Boston	Offices > USA	AX33ziLH39IOg4X5d0je4KM	Crystal Report
CR Table Grenoble	Offices > France	AeKXP5zuj0lhsQzvl5jCBBI	Crystal Report
CR Table Lille	Offices > France	ARXymhtMALZOu4ZR47ODdg8	Crystal Report
CR Table Atlanta	Offices > USA	Aa312r0DH3pJn5fiF3NO2no	Crystal Report
Technical Dashboards	Presales > Asia Sales	Ac5yUMKEmdRLodwKutkI3DI	Webi

### Backup

This report lists all objects backed up by 360Plus, including the path, name, CUID, and backup date. It assures BI administrators that the backup system is functional and points them to the folders in which the backups are stored.

Path	Name	CUID	Date	Size
/Root Folder/Jordan/	Marketing Dashboard	Aal.euTrBhOrnEPp7tzWOc	2019-03-11 16:00:00	36.66 KB
/User Folder/Admin/	Sales Revenue	Aff3_vjMRONMrGPEXlpuu8s	2019-06-25 11:43:00	36.61 KB
/User Folder/Admin/	Expense per City	AfDWFkz_uxFNtubVuWC0ezs	2019-01-21 12:33:00	37.4 KB
/User Folder/Admin/	Employee Dashboard	ASOmKYUk.nZKvj8kAXeXlc	2019-02-08 09:53:00	37.58 KB
/User Folders/Admin/Tony	Universe Usage	AfLS7IDzpmJKS4819ThaC2Y	2019-01-04 10:00:00	37.61 KB
/User Folders/Tony/	Expense per Year	Ac5yUMKEmdRLodwKutkI3DI	2019-04-11 17:00:02	33.98 KB
/Root Folder/360Bind/	Demo 360Bind	AeKXP5zuj0lhsQzvl5jCBBI	2019-05-17 13:52:01	33.74 KB
/Root Folder/360Bind/	Regression Testing	ARXymhtMALZOu4ZR47ODdg8	2019-03-11 16:00	37.19 KBz



## **6.** **Scheduling & Publication Reports**



## 6. Scheduling & Publication Reports

An essential feature of SAP BusinessObjects is the ability to distribute content to users and external destinations. BI administrators are responsible for monitoring scheduled jobs and taking action when failures occur. Scheduling and publication reports make this possible.

### Historical Scheduling Analysis

This report contains information about recurring scheduled jobs, including folder name; document name; instance name and type; schedule status, begin date, destination, and duration; and error message. It provides BI administrators with a big picture of scheduled jobs and documents distributed outside the BI platform, and identifies failed jobs for troubleshooting purposes.

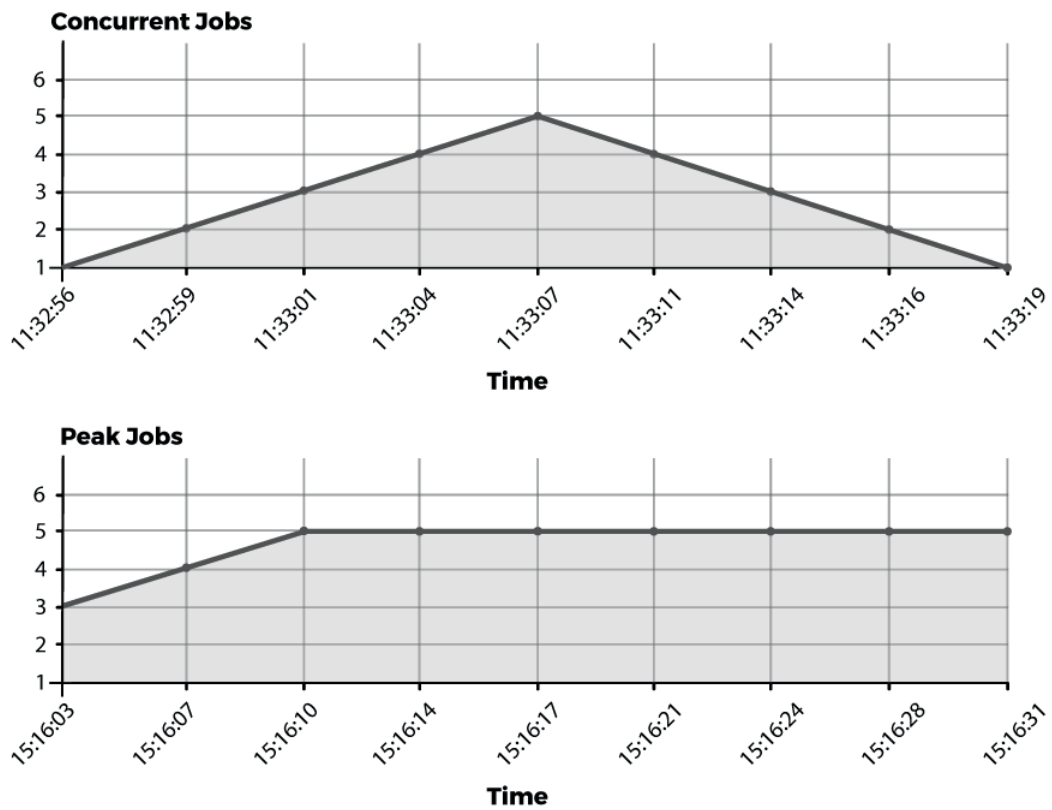
Folder Name	Document Name	Instance Name	Instance Type	Schedule Status	Schedule Begin Date	Schedule Destination	Schedule Duration
/Root Folder/360eyes report/	360eyes - 00 Snapshot	360Cast_360eyes - 00	Webi	Complete	01/04/2019	Default	26
/Root Folder/360eyes report/	360eyes - 09 Lumira	360eyes - 09 Lumira	Webi	Complete	11/02/2019	CrystalEnterprise	22
/Root Folder/Ex_Crystal_SQL/	Sales Revenue_Cast	Sales Revenue_Cast	PDF	Failure	23/04/2019	Default	3
/Root Folder/Ex_Crystal_SQL/	Sales Revenue_Cast	Sales Revenue_Cast	PDF	Recurring	06/03/2019	Default	10
/Root Folder/Ex_Crystal_SQL/	Sales	360Cast_Sales	Excel	Complete	28/03/2019	CrystalEnterprise	20
/Root Folder/Ex_Crystal_SQL/	Sales	360Cast_Sales	Excel	Complete	09/04/2019	Default	16

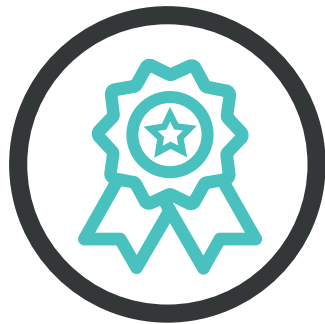


## 6. Scheduling & Publication Reports

### Live Scheduling Analysis

This report provides information about the number of concurrent scheduled jobs over a period of time and the maximum (peak) number of concurrent scheduled jobs since the Adaptive Job Server was last started. It helps BI administrators determine if a busy server is the reason for performance problems so they can reschedule jobs for greater equilibrium, if necessary.





## **7.** **Quality** **Reports**

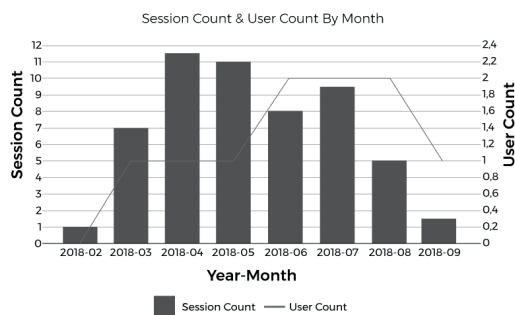


## 7. Quality Reports

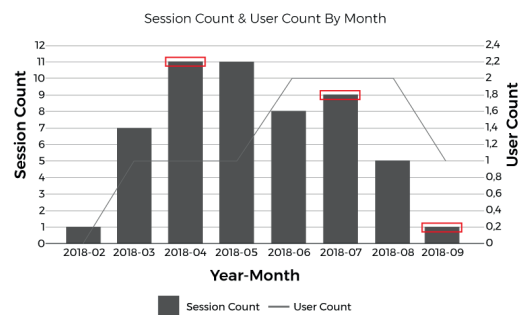
BI administrators must ensure the quality and accuracy of SAP BusinessObjects documents. Quality reports make this possible.

### Regression Testing

360Suite regression testing generates reports that identify differences in *data*, *images*, *structure*, *style*, and *execution* times between two instances of the same SAP BusinessObjects document *over time* and *across environments and versions*. By locating regressions, regression testing points BI administrators in the right direction so they can identify root causes, analyze impact, and resolve issues.



Year-Month	Session Count	User Count
2018-02	1	0
2018-03	7	1
2018-04	11.5	1
2018-05	11	1
2018-06	8	2
2018-07	9.5	2
2018-08	5	2
2018-09	1.5	1



Year-Month	Session Count	User Count
2018-02	1	0
2018-03	7	1
2018-04	11	1
2018-05	11	1
2018-06	8	2
2018-07	9	2
2018-08	5	2
2018-09	1	1



## 7. Quality Reports

### Versioning and Lifecycle Management

This report shines a light on the report lifecycle and provides a record of events, including date, type, actor, and description. It helps BI administrators monitor report development, whether in-house or offshore, and ensure quality.

Lifecycle						
(1 of 1) ⏮ ⏪ ⏩ ⏭ 20						
CMS ▼	Name	Current Version	Event Date From: To:	Event Type Event Type ▼	Event Actor ▼	Version Comment
@sapbi42demo.6400	360eyes UNIVERSE Universe Documentation	0.1-d	15-05-2019 19:24:32	Create Version	plancaster	Updated date field
@sapbi42demo.6400	360eyes UNIVERSE Universe Documentation	0.1-c	14-05-2019 13:51:18	Include Version to Realise	plancaster	Update
@sapbi42demo.6400	360eyes UNIVERSE Universe Documentation	0.1-b	12-05-2019 11:26:42	Add Object to Package	plancaster	Updated date field
@sapbi42demo.6400	360eyes UNIVERSE Universe Documentation	0.1-a	12-05-2019 11:23:11	Remove Object from Package	plancaster	Remove field

### Track Duplicated Reports

This report identifies duplicate Webi and Deski reports (i.e., reports that have been copied with few or no modifications), and includes information such as document path, name, and type. It enables BI administrators to clean up environments by deleting or migrating duplicate reports.

#### Test (MD5: 19014fc9b1e7439a647c98ed986f19a5)

Document Path	Document Name	Document Type
/Root Folder/Jordan/	Test for Marjo	Webi
/Root Folder/Marjo/	test_marjo	Webi
/Root Folder/Marjo/	group test	Webi

#### July Sales Report (MD5: 2ec3db766a2b975f4a2a2aed6bbd9cc)

Document Path	Document Name	Document Type
/Root Folder/Jordan/	copy sales report	Webi
/Root Folder/Sales/	July Sales Report	Webi
/User Folder/Admin/	July Sales Report copy	Webi
/User Folder/Bruno/	July Sales Report v2	Webi
/User Folders/Tony/	Sales File	Webi



## 7. Quality Reports

### Impact Analysis

Impact analysis reports identify documents that contain specific Universe objects, SQL expressions, or variables. They help BI administrators understand the impact of altering Universe objects and database objects.

Universe	Object Class	Object Name	Document Path	Document Name	Document Type	Dataprovider Name
Rio2016.unx	Jo	Athlete	/Root Folder/0-Demo Version Management/	ZZ_Rio Games 2016	Webi	Result
Rio2016.unx	Jo	Athlete	/Root Folder/Aesir 99 Retail/Versioning/	ZZ_Rio Games 2016	Webi	Result
Rio2016.unx	Jo	Athlete	/Root Folder/BOBJ Versioning Sample/	YC_Rio Games 2016	Webi	Result
Rio2016.unx	Jo	Athlete	/Root Folder/Web Intelligence Samples/	ZZ_Rio Games 2016	Webi	Result
Rio2016.unx	Jo	Code Country	/Root Folder/0-Demo Version Management/	ZZ_Rio Games 2016	Webi	Result
Rio2016.unx	Jo	Code Country	/Root Folder/Aesir 99Retail/Versioning/	ZZ_Rio Games 2016	Webi	Result
Rio2016.unx	Jo	Code Country	/Root Folder/BOBJ Versioning Sample/	YC_Rio Games 2016	Webi	Result
Rio2016.unx	Jo	Code Country	/Root Folder/Web Intelligence Samples/	ZZ_Rio Games 2016	Webi	Result
Rio2016.unx	Jo	Country	/Root Folder/0-Demo Version Management/	ZZ_Rio Games 2016	Webi	Result
Rio2016.unx	Jo	Country	/Root Folder/Aesir 99 Retail/Versioning/	ZZ_Rio Games 2016	Webi	Result

### Summary with Bad Documents

This report identifies documents with excessive dependencies. (By default, “excessive” is defined as more than 20 reports, 15 data providers, and/or 50,000 fetched rows, but filters are adjustable.) It helps BI administrators find and fix poor-performing reports, which is especially important in self-service environments because report creators may not be aware of [best practices](#) and [mistakes to avoid](#).

#### Documents with more than 20 reports:

Document Folder Path	Document Name	Content Kind	Number of Reports
/Root Folder/HR/	Employee Dashboard	REPORT	33
/Root Folder/Marketing/	Marketing Dashboard	REPORT	33
/User Folders/Admin/	Universe Usage	REPORT	33
/User Folder/Pauline/	Sales Revenue	REPORT	37
/User Folder/Pauline/	Expense per City	REPORT	32
/User Folders/Tony/	Expense per Year	REPORT	36

#### Documents with more than 50,000 rows:

Document Folder Path	Document Name	Dataprovider Name	Dataprovider Nbrowsfetched
/Inboxes/cochin/	Chris weekly report	Query 1	2,843,936
/Inboxes/plancaster/	Document for Presales	CMS	68,029
/Inboxes/tsansico/	Marketing Dashboard	REPORT	72,802
/Root Folder/HR/	Impact Analysis	REPORT	78,696
/Root Folder/Sales/	Sales Forecast	REPORT ACTION	78,696



# The Suite Spot

---

360Suite reports may not be the answer to the ultimate question of life, the universe, and everything, but they enhance the productivity of BI administrators who interact with SAP BusinessObjects. By exposing BI on BI, these 42 different 360Suite reports offer critical insight and empower BI administrators to work smarter, not harder, to maximize the potential of a valuable business intelligence asset. They provide a roadmap to the sweet spot — the optimal balance of SAP BusinessObjects costs and benefits.

360Suite is a suite of **agile governance solutions** for SAP BusinessObjects developed by Wiiisdom.

At Wiiisdom, we transform your **Analytics landscape** into a **reliable** place to make **better, trusted decisions** every day and maximize your data assets.

360Suite is a set of solutions to ensure **quality, reliability, performance, and efficiency** of SAP BusinessObjects through testing, auditing, monitoring, cataloging, and scheduling methodologies. 360Suite is designed for large organizations looking to **mitigate data risks**, automate operations, and is the solution of choice for any migration project.

**Request a free trial, and put these reports to the test**

#### Authors:

Yasmina Couty, Patrick Perrier



#### Content Writer:

Kristen Gray



# WORK ~~HARDER~~ SMARTER WITH 360Suite



Visit <https://wiiisdom.com/360suite/>